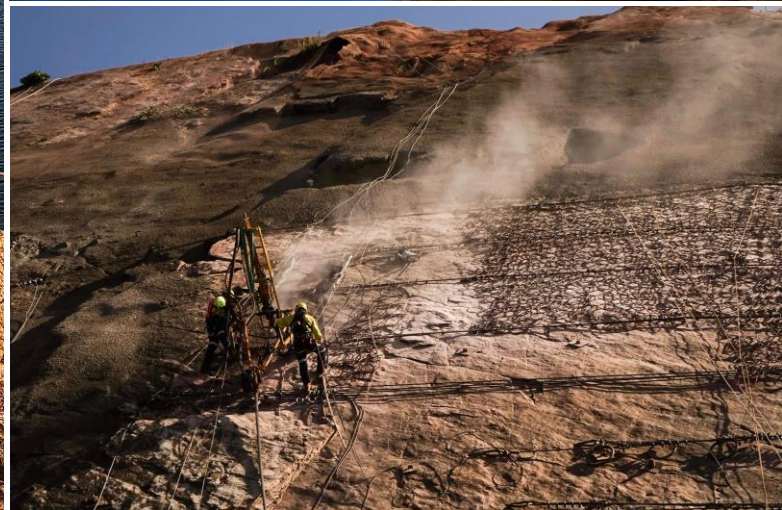
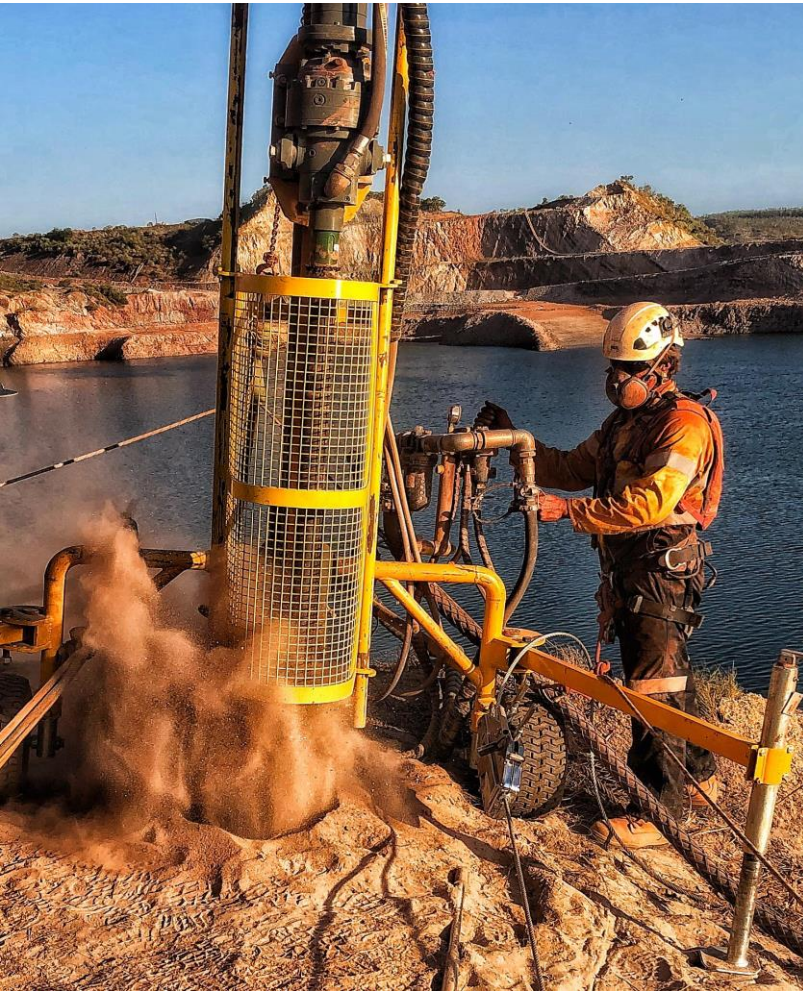


Footwall Rehabilitation



LOCATION:

Koolan Island

CLIENT:

Mount Gibson

DURATION:

9 months

PROJECT SCOPE

Ausdrill was mobilised to assist with the removal of existing ground support during the dewatering of the open cut mining operation off the Kimberley coastline in Western Australia. All works were completed from both a barge style pontoon from the water level and rope access from above the water line. The scope of works included Shotcreting, the removal of existing rockfall barriers, drape mesh, cutting of cablebolt and Gewi anchors.