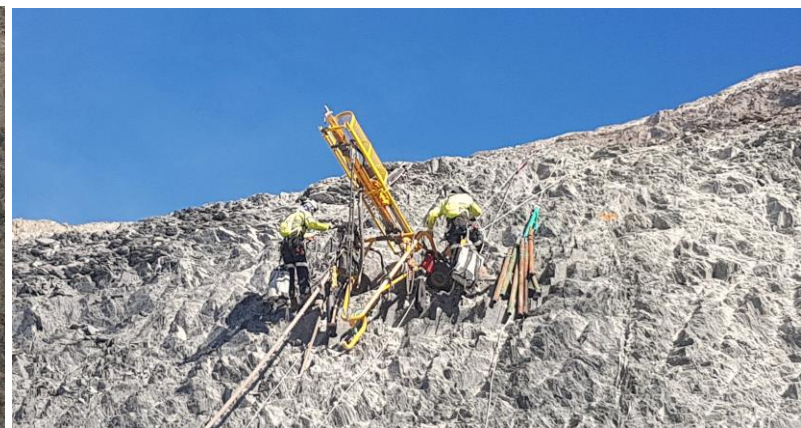


# Portal Support – Mesh & Bolting



**LOCATION:**  
Bartons Mine Site - Pilbara

**CLIENT:**  
Millennium Minerals Limited

**DURATION:**  
6 weeks

## PROJECT SCOPE

Ausdrill has successfully completed an Underground Portal Support project in the Pilbara. The scope of work included the installation of 3,000m<sup>2</sup> of Geobrugg Tecco rockfall mesh system and 500m of 32mm and 36mm rock bolts. The works were conducted using a top-down excavation approach with rope access and high access drilling. This project was supported by our Newman branch where we have a full complement of experienced operators to support Pilbara projects.